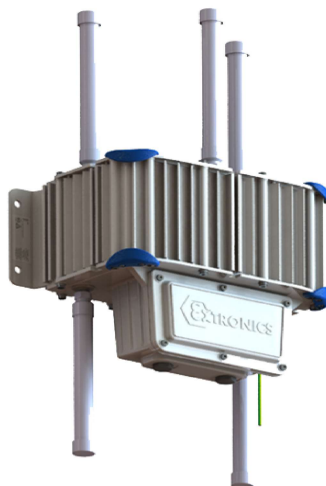


CASSIA ATX2000 Bluetooth Gateway

Quick installation and start-up guide



Advanced features

Power	100 to 253 VAC, 47 to 63 Hz
Connectivity details	
Bluetooth protocol	4.0/4.1/4.2/5.0
Bluetooth antenna	Omni - directional
Wi-Fi (802.11 a/b/g/n/ac)	2.4 GHz and 5 GHz ISM band
LTE modem	Cat 1 LTE (3GPP Rel.10) ABB SIM card with 2 years data plan
Other interfaces	10/100 BASE-T Ethernet (RJ-45) uplink Reset functionality
Mechanical features	
Dimension	H x W x D: 293 mmx 388 mm x 220 mm
Weight	10 Kg
IP rating	IP54
Enclosure	Marine grade copper-free aluminum alloy, e-coat with epoxy powder coated
Environment features	
Operating temperature	-20°C to +60°C (-4°F to +140°F)
Storage and transportation temperature	-50°C to +70°C (-58°F to +158°F)
Humidity	0 to 95% non-condensing

Safety instructions



ATTENTION! The Cassia ATX2000 Bluetooth gateway should be installed by technically qualified personnel. Failure to install the gateway in compliance with applicable codes and regulations and according to the manufacturer's recommendations may result in unsatisfactory performance or equipment failure.

Unpack the delivery

The Cassia ATX2000 kit consists of the materials listed below.

		No.	Description
		1	Data acquisition unit
		2	4G cellular antennas (2 pieces)
		3	Detailed manual - Extronics Configured Products Group - IBR200 Variation installation and operating manual
		4	Wi-Fi and Bluetooth® antennas (3 pieces)
		5	Mounting kit *
		6	ABB Cassia ATX2000 Bluetooth Gateway quick installation and start-up guide
		7	ABB SIM card holder and activation leaflet**

- * Mount ATX2000 according to Extronics Detailed manual.
 - **ABB SIM card can only be activated by an ABB personnel. For support contact ABB support: support.powertrain@abb.com
- For more information, see the extended manual - *Extronics Configured Products Group - IBR200 Variation installation and operating manual.*

Antenna installation

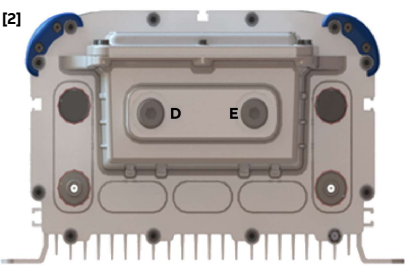
Install the antennas to the correct positions according to the information in the below table. Do not over tighten the antennas. See an example of BLE socket fixed with iANT216-M antenna.



Ordering code	Description	4G Cellular antenna	Wi-Fi antenna	Bluetooth® antenna
3AXD50001019037	Cassia ATX2000 for EMEA	ATX-iANT213-QB	ATX-iANT216M	ATX-iANT216M
3AXD50001081164	Cassia ATX2000 for North America	ATX-iANT293-US	ATX-iANT216M	ATX-iANT216M
3AXD50001081157	Cassia ATX2000 for APAC	ATX-iANT213-QB	ATX-iANT216M	ATX-iANT216M

Electrical Installation

1. Remove all bolts to open the cover as shown in below figure [1].



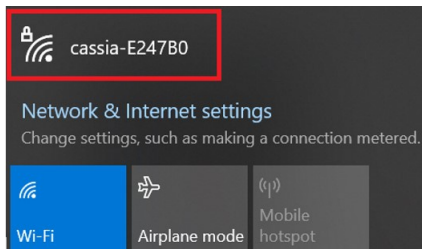
2. Add a suitable Ex-certified cable gland to the power cord (not included in the package). The thread size in device is M20x1.5.
3. Insert the power cable inside the housing through holes marked D or E, as shown in figure [2].
4. Connect power cord wires to the green screw terminal block (P8).
5. Connect the screw terminal block to the mating connector.

Connectors	Description
P2	Ethernet port RJ45. Ethernet connection to Cassia X2000 gateway. by default connected to P6.
P3	Not in use.
P6	Ethernet port RJ45. Ethernet connection to modem. By default connected to P2.
P8	Power input: 100 to 264 VAC
P10	Ethernet port, loose wires. Ethernet connection to Cassia X2000 gateway. Used as an alternate connector for P2.
G	Auxiliary port or pressure test port.

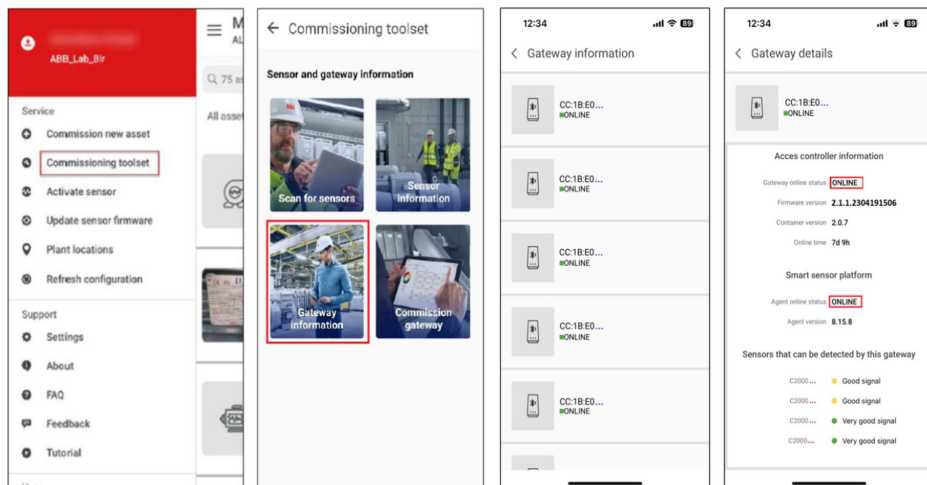
6. Close the cover and tighten the screws.
7. Connect to AC power.

Verification

Wait for three minutes until the device starts and Cassia ATX2000 generates the Wi-Fi hotspot. If the network is available, the device works as expected.



Commission the ATX2000 device according to the **ABB Swipecguide manual** (link at the bottom of this page) and verify the **Online status*** through the **Commissioning toolset** option in the ABB Smart Sensor Platform application.



*Online status in ABB Access controller and Smart Sensor Platform updates after up to 2 hours.

For more information on the Cassia ATX2000 Bluetooth gateway, see

- Cassia networks web page: (<https://www.cassianetworks.com/products/atx2000-bluetooth-gateway/>).
- Cassia ATX2000 datasheet: (https://www.cassianetworks.com/download/docs/datasheet/Cassia_ATX2000_Datasheet.pdf)
- ABB ATX2000 Swipecguide: (<https://abb.swipecguide.com/guide/abb-ability%E2%84%A2-digital-powertrain-%E2%80%93-condition-monitoring-for-rotating-equipment-smart-sensor>)