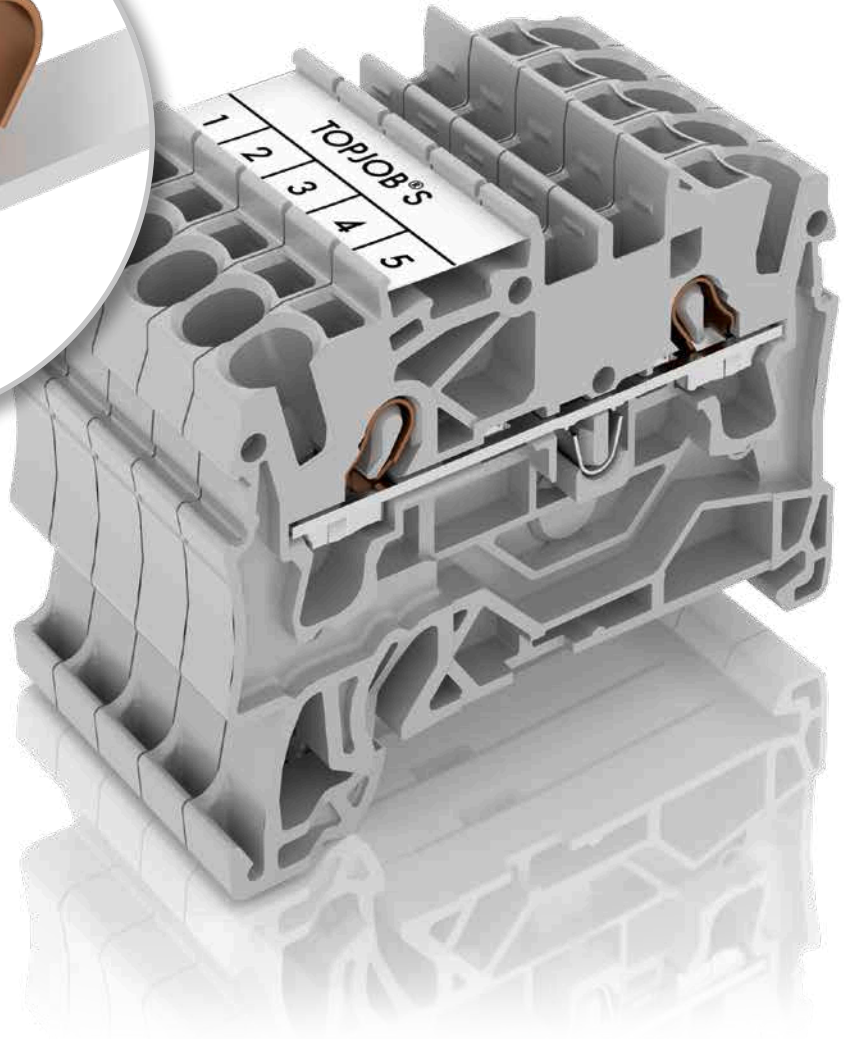
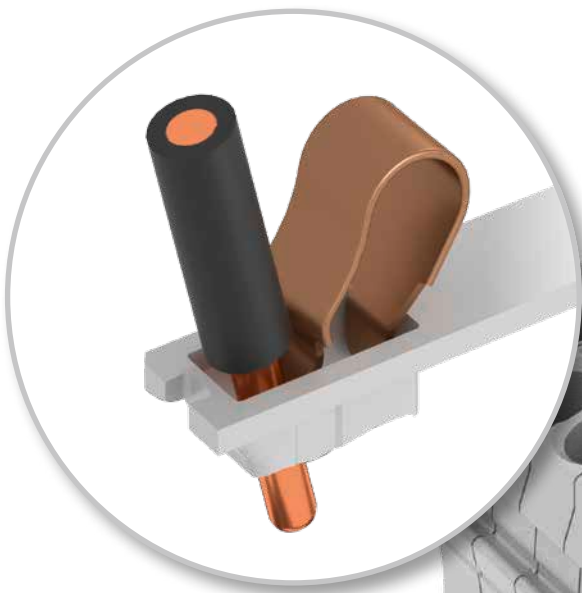


# WAGO<sup>®</sup> innovative

NEW PRODUCT HIGHLIGHTS | ISSUE 1/2015

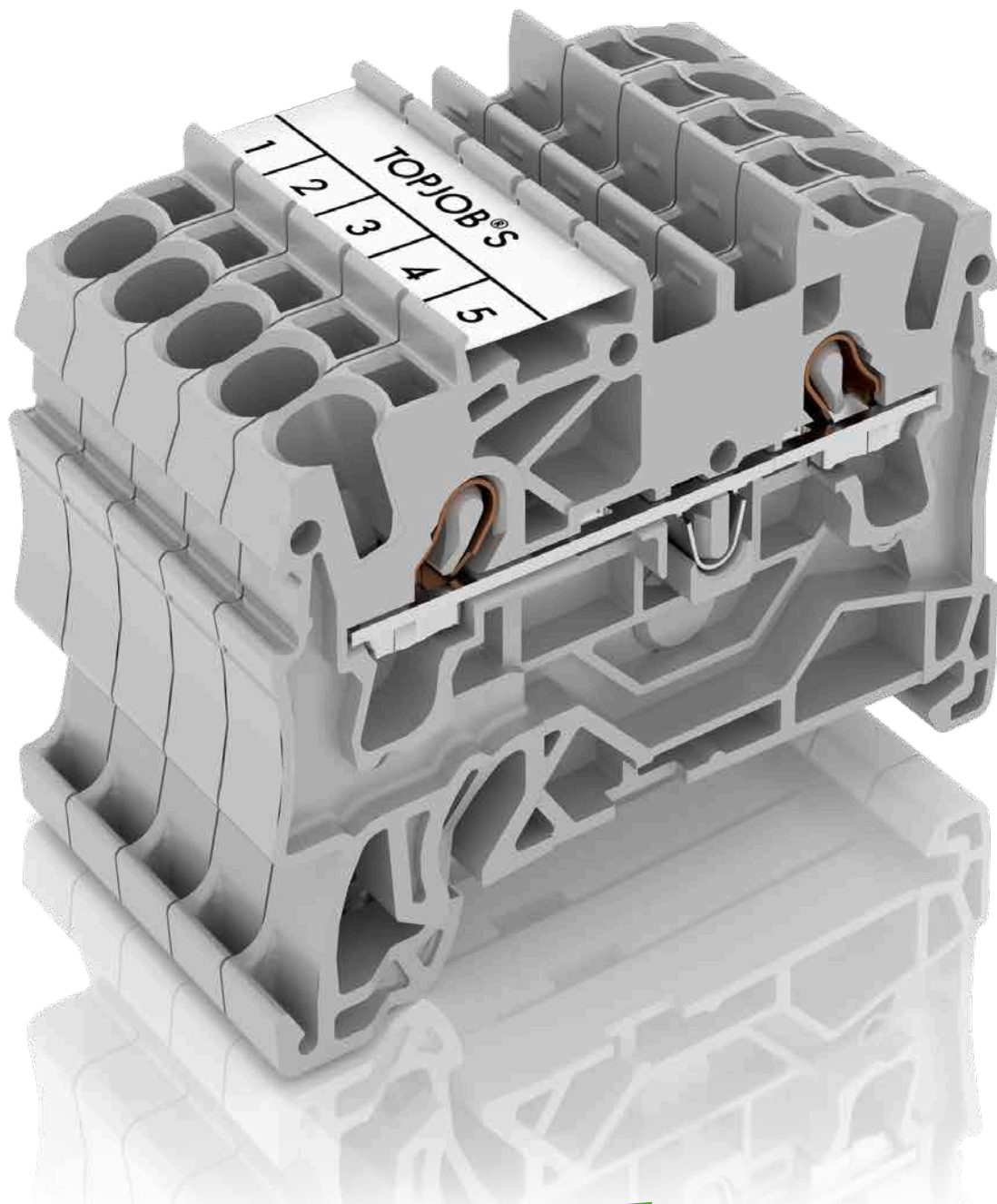
TOPJOB<sup>®</sup> S — PUSH YOUR PERFORMANCE TO THE TOP.



**WE!**  
**INNOVATE!**

# TOPJOB® S – PUSH YOUR PERFORMANCE

TOPJOB® S Rail-Mounted Terminal Blocks with the Reliability of Push-in

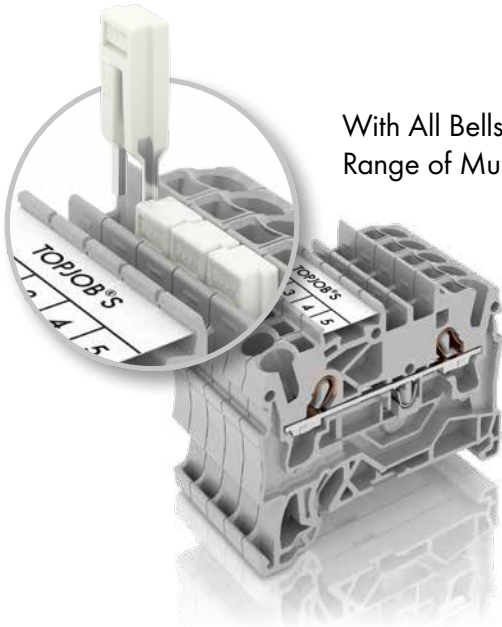


- For all conductor types
- Range of multifunctional jumpers
- The fastest marking system
- Industry-leading safety reserves



# TO THE TOP. CAGE CLAMP®

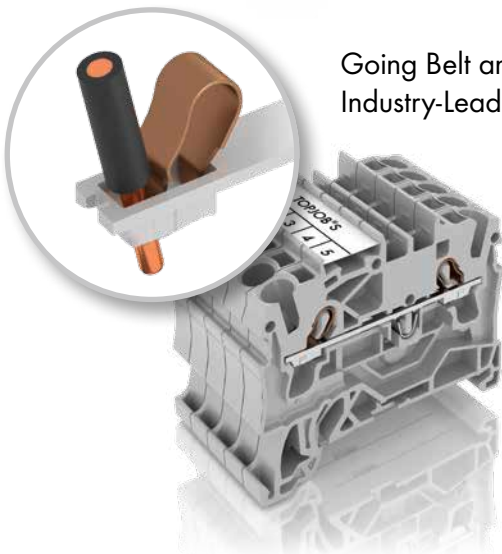
**WE  
INNOVATE!**



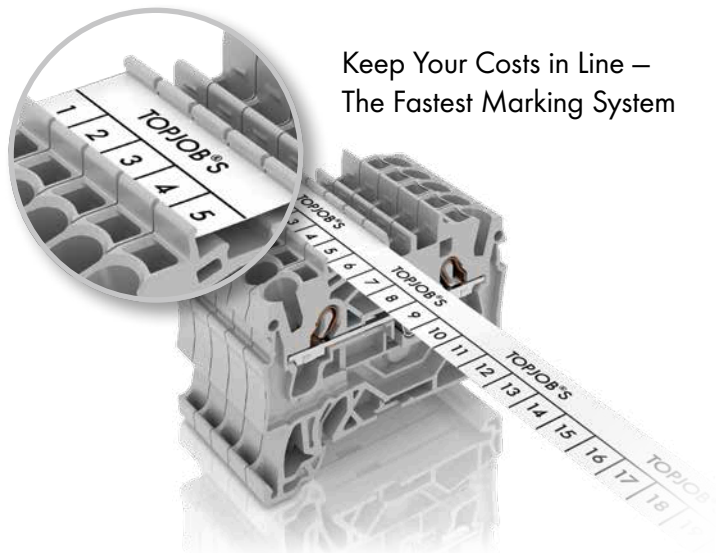
With All Bells and Whistles –  
Range of Multifunctional Jumpers



One for All and All in One –  
For All Conductor Types



Going Belt and Suspenders –  
Industry-Leading Safety Reserves



Keep Your Costs in Line –  
The Fastest Marking System

# THR TERMINAL BLOCKS

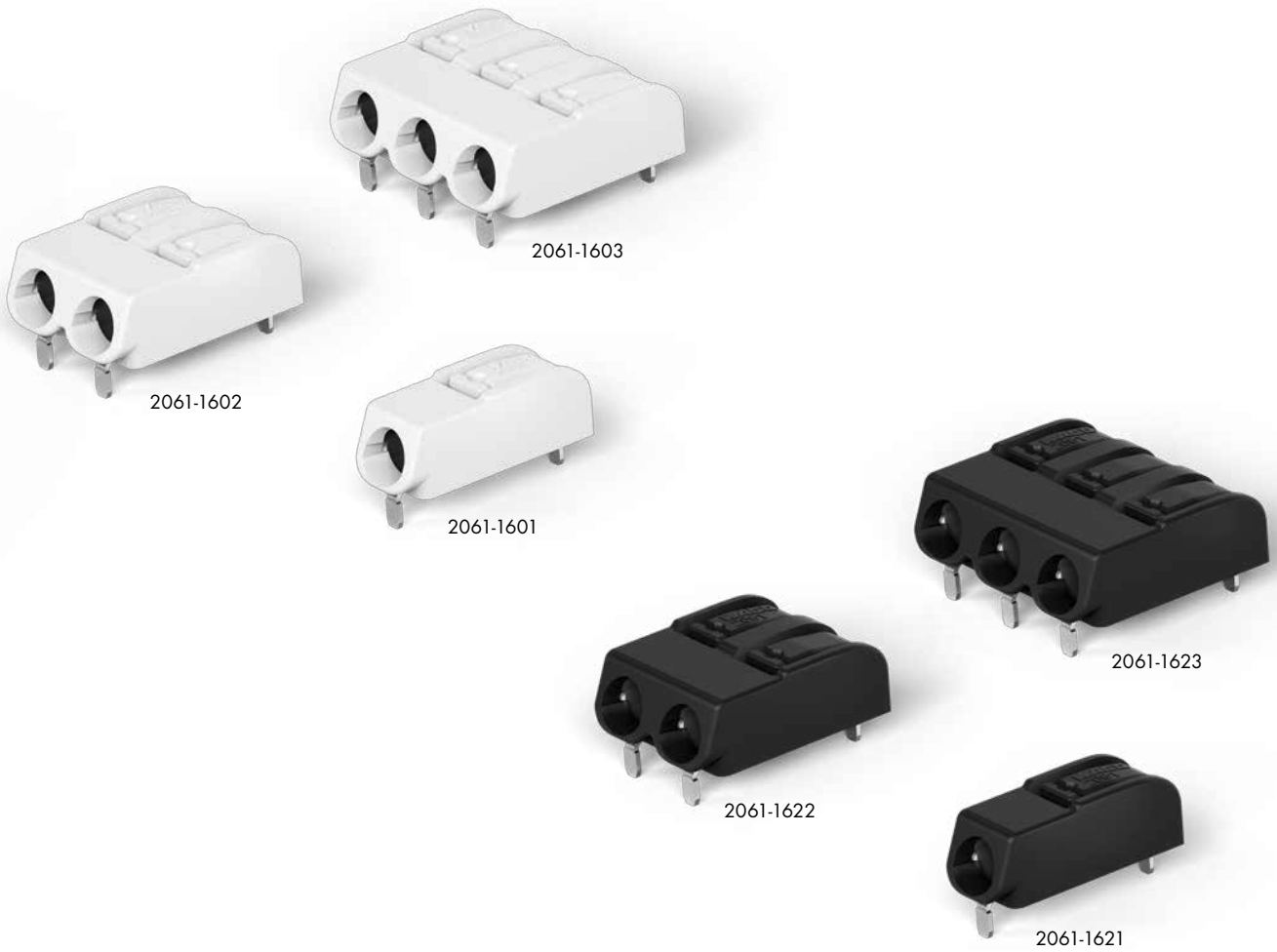
2061 Series – Tremendous Flexibility in Confined Spaces



With the new 2061 Series THR model, WAGO offers an extremely low-profile PCB terminal block that features solder pins.

The 2061 Series THR Terminal Blocks are available in both white and black housings. The 2061 enables terminal strips to be assembled side-by-side without pole loss, permitting any pole configuration.

- Extremely low profile of just 5.6 mm
- Rated current up to 17.5 A
- Conductor sizes up to 1.5 mm<sup>2</sup>/16 AWG
- Simple push-in termination of solid conductors
- Push-buttons simplify insertion/removal of all conductor types
- Available as SMD and THT/THR variants



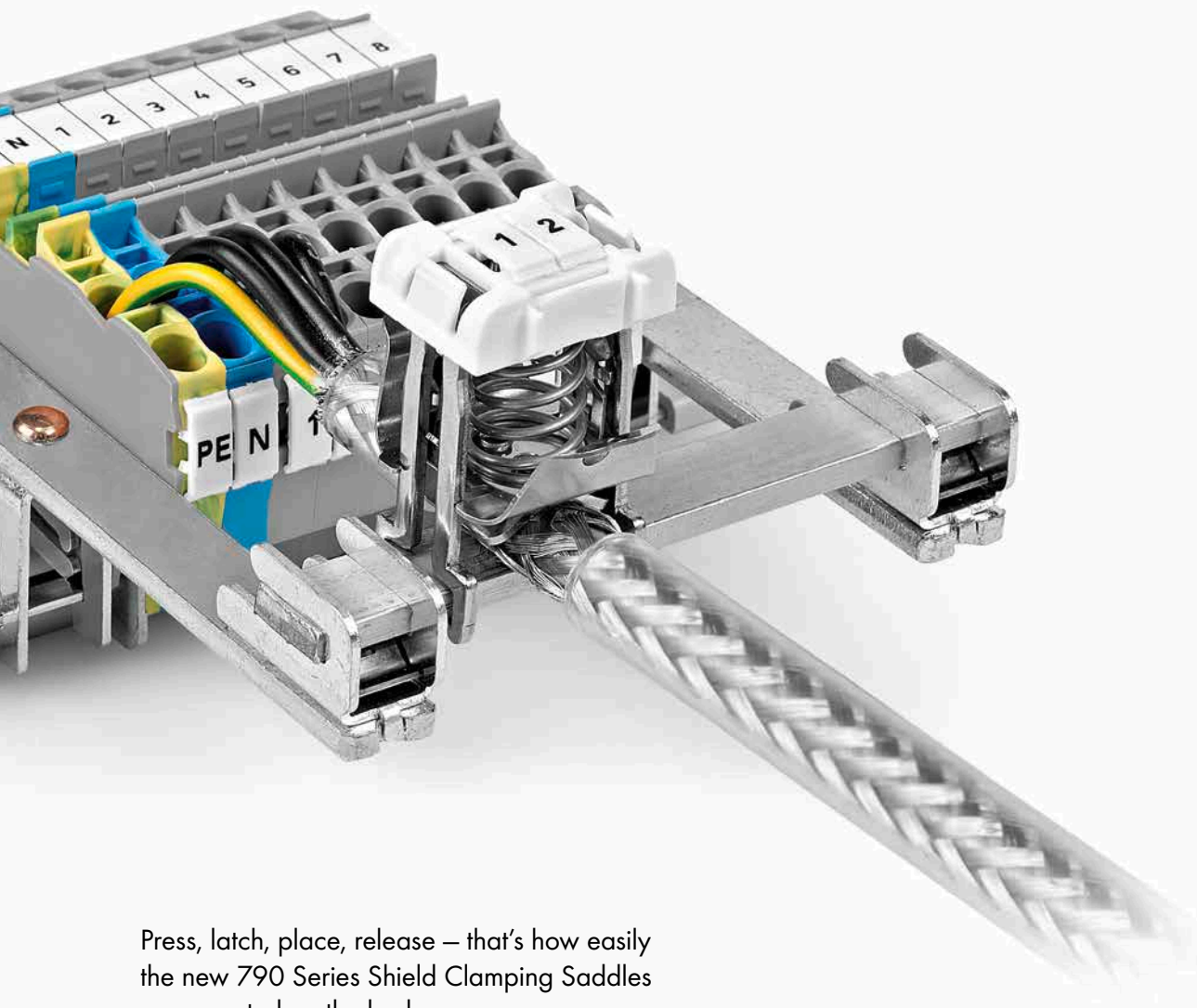
- Streamlined variants with 1.5 mm long solder pins for THR (Through-Hole Reflow) soldering
- Variants with 2.4 mm long solder pins are also available for manual or wave soldering
- Greater flexibility for PCB assembly
- Space-saving solutions for space-restricted applications





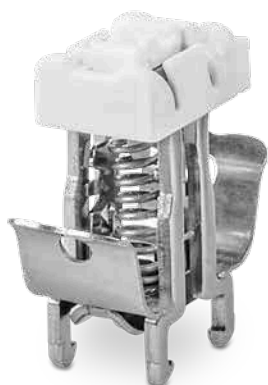
# SPRING-EQUIPPED SHIELD CLAMPING SADDLES

Great Usability via Patented Latching Mechanism



Press, latch, place, release – that’s how easily the new 790 Series Shield Clamping Saddles are mounted on the busbar.

- The spring provides excellent shield contact and performance – it automatically compensates for any settling of the cable.
- Several mounting options are available, e.g., 10 x 3 mm busbar, specialty slotted carrier rail and mounting plate.



790-208  
Shield diameters from 3 to 8 mm



790-216  
Shield diameters from 6 to 16 mm



790-220  
Shield diameters from 6 to 20 mm

- Great usability via patented latching mechanism
- Convenient operation provided by large, recessed grips
- Labeling with WMB markers or marking strips
- Compatible with a full complement of WAGO accessories

# EPSITRON® CLASSIC POWER

The Robust 2-/3-Phase Power Supplies



Item No. 787-1640\*  
3 x 400-500 VAC  
24 VDC / 10 A



Item No. 787-1628\*  
2 x 200-500 VAC  
24 VDC / 5 A



Item No. 787-1642\*  
3 x 400-500 VAC  
24 VDC / 20 A



Item No. 787-1644\*  
3 x 400-500 VAC  
24 VDC / 40 A

- Ideal complement to existing single-phase power supplies within the EPSITRON®CLASSIC Power Line
- Wide input voltage range and increased transient protection level
- DC OK contact
- Marking field for device identification

- Slimmer and more communicative – simply better
- Integrated TopBoost permits cost-effective, secondary-side fusing
- Convenient pre-wiring via CAGE CLAMP® connection technology – 100 % protected against mismatching
- Ready for use worldwide thanks to both UL and GL approvals

\*Available May 2015



# JUMPFLEX®

## Configuration Display for Interface Modules

**WE  
INNOVATE!**

- Touch functionality via control panel
- Can be easily plugged into signal conditioners
- Configure and visualize process values
- Copy configuration data from device to device

JUMPFLEX® Signal Conditioners feature multiple configuration options:



Configuration via PC software



Configuration via JUMPFLEX®-ToGo Smartphone App



Configuration via touch panel – an innovative display



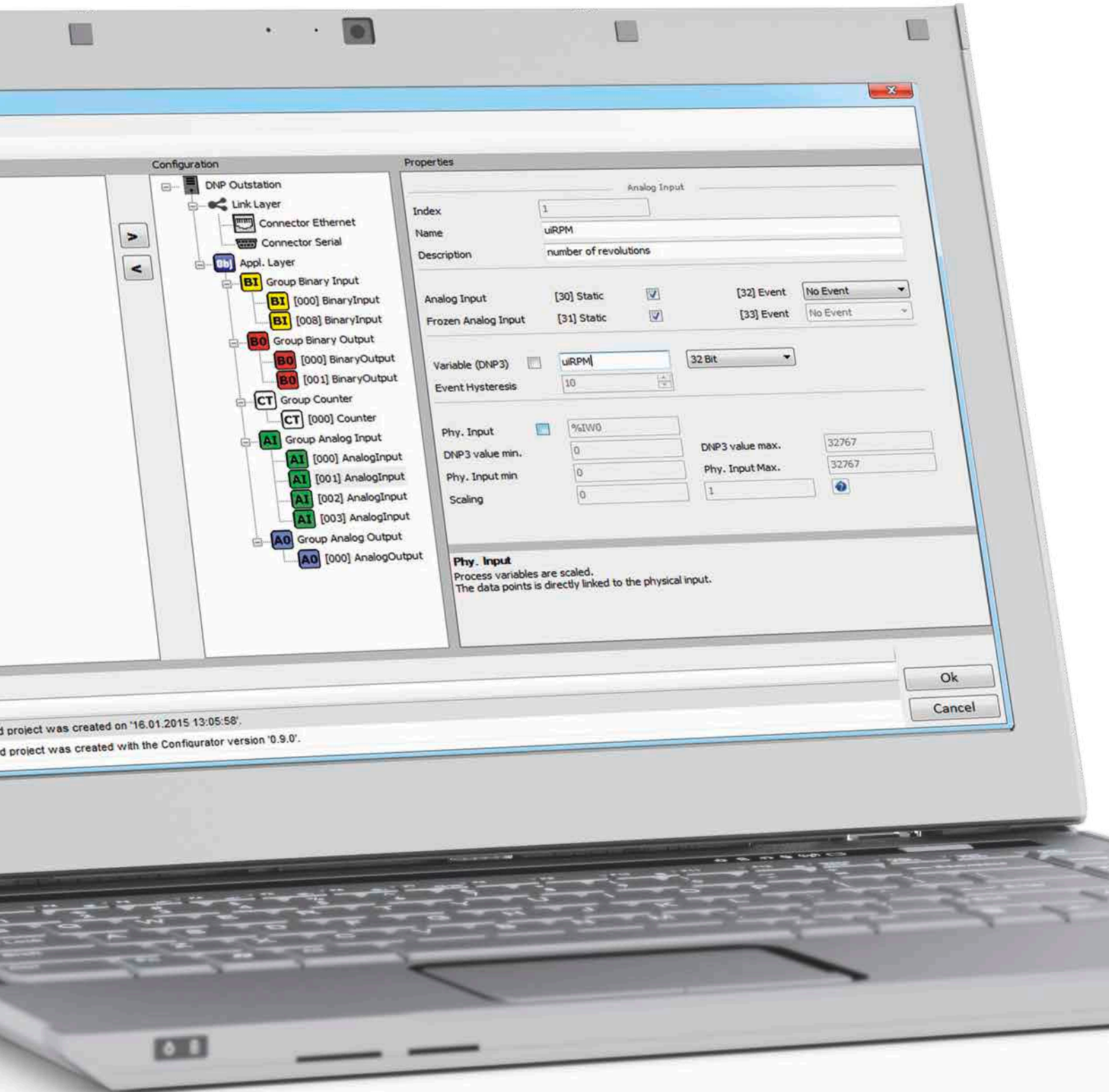
Configuration via DIP switches



The 2857-900 Configuration Display is suitable for 12.5 mm and 22.5 mm wide module housings

# WAGO TELECONTROLLERS SUPPORT DNP3

## Easy Parameter Setting via Integrated Configurator



- Compatible with telecontrollers in every performance class
- DNP3 outstation with level 2 compatibility
- TCP, UDP and serial DNP3 communication
- Data exchange with other engineering tools via DNP3 XML device profile format
- Seamless integration into the WAGO-I/O-SYSTEM 750 and 750 XTR lines



750-880/040-001



750-8206/025-001



- Support worldwide telecontrol protocols
- Modular I/O system for automation and telecontrol protocols
- Easy DNP3 protocol parameterization via configurator integrated into CODESYS

# WE! INNOVATE!

60253247 - 0888-0206/0115-6901 - WAGO INNOVATIVE 1/15 US - 03/15 - Printed in Germany - Subject to design changes

WAGO Kontakttechnik GmbH & Co. KG  
Postfach 28 80 · D - 32385 Minden  
Hansastraße 27 · D - 32423 Minden  
Germany

Phone: +49 571 887-0  
Fax: +49 571 887-169  
Email: [info@wago.com](mailto:info@wago.com)  
Online: [www.wago.com](http://www.wago.com)

